

Impact100 Global Day of Impact Public Health Panel



CITY OF MILWAUKEE
HEALTH DEPARTMENT



OAKCREEK
— WISCONSIN —
HEALTH



WASHINGTON OZAUKEE
PUBLIC HEALTH DEPARTMENT



Public Health
Prevent. Promote. Protect.

Waukesha County Public Health

Agenda

1. Meet the Panelists
2. About Public Health
3. Health Department Highlight
4. Q & A



❖ Milwaukee

- 5 Year Strategic Plan
- Anti-Racism Approach

❖ Washington Ozaukee

- Sexual Health & Wellness
- Access to & Linkage with Clinical Care

❖ City of Oak Creek

- Mental Health
- Maternal and Child Health

❖ Waukesha County

- Substance Use
- Communicable Disease Control

Meet the Panelists



Kirsten Johnson
City of Milwaukee
Health Commissioner



Darcy DuBois
City of Oak Creek
Health Officer



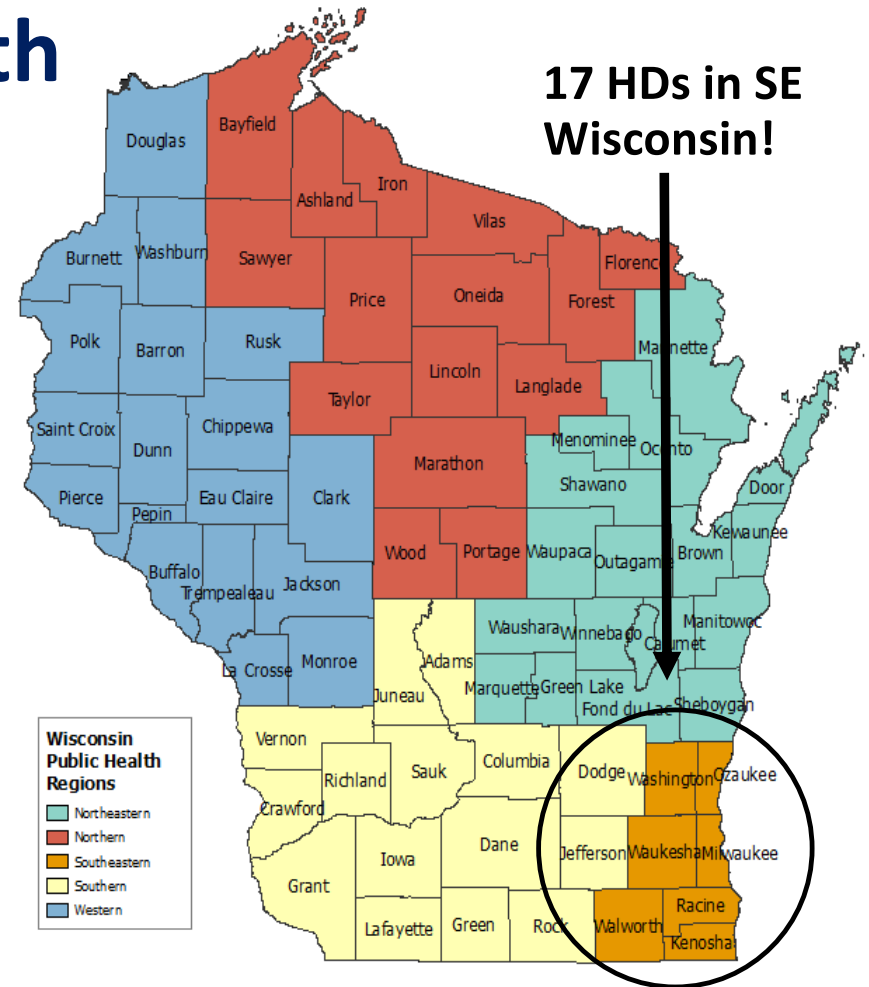
Hollie Milam
Washington Ozaukee County
Deputy Director



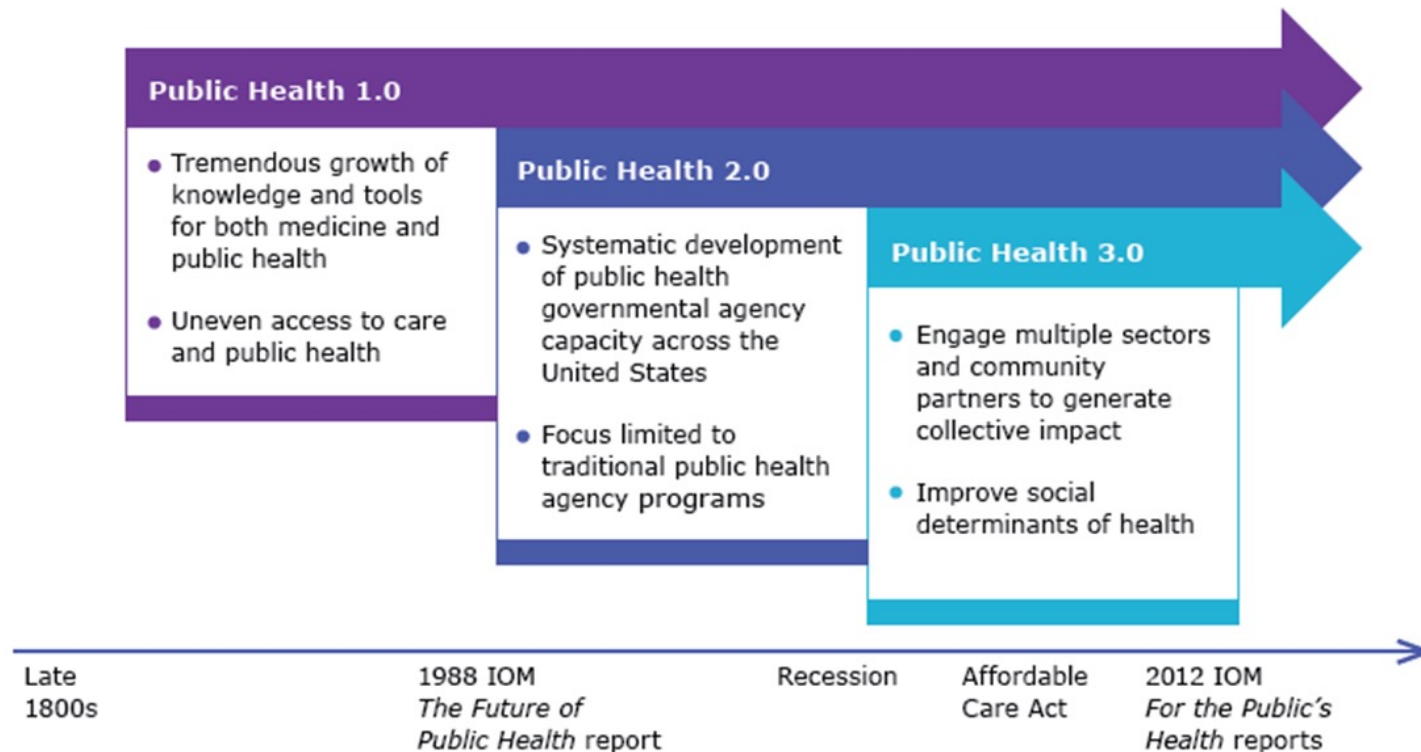
Frances Thomas
Waukesha County
Strategy Supervisor

Southeastern Region Health Departments

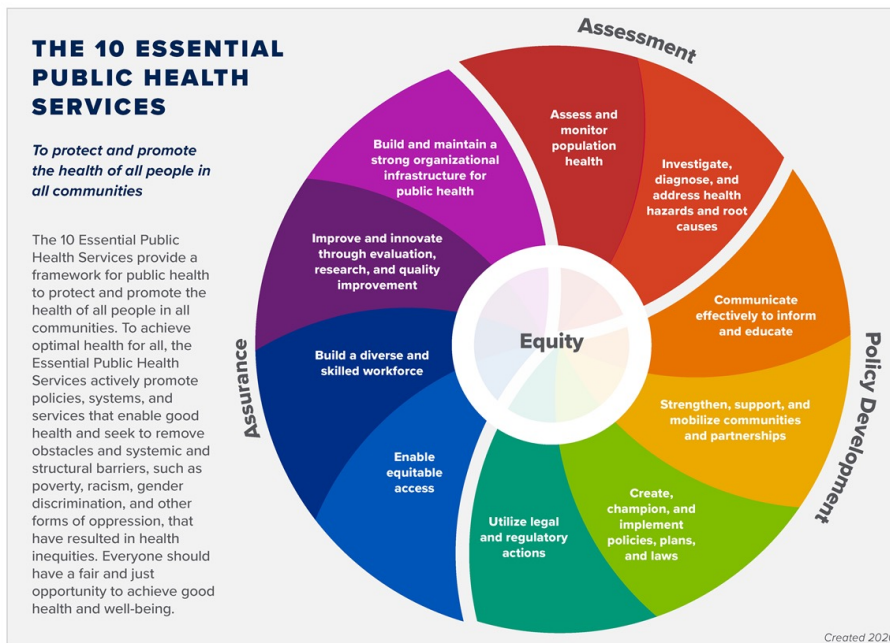
- Kenosha County
- Racine County
- City of Racine
- Walworth County
- Washington
- Ozaukee County
- Waukesha County
- Milwaukee
- Cudahy
- Franklin
- Greendale
- Greenfield
- Hales Corners
- North Shore
- Oak Creek
- South Milwaukee /St. Francis
- Wauwatosa
- West Allis



Public Health 3.0



Public Health 3.0



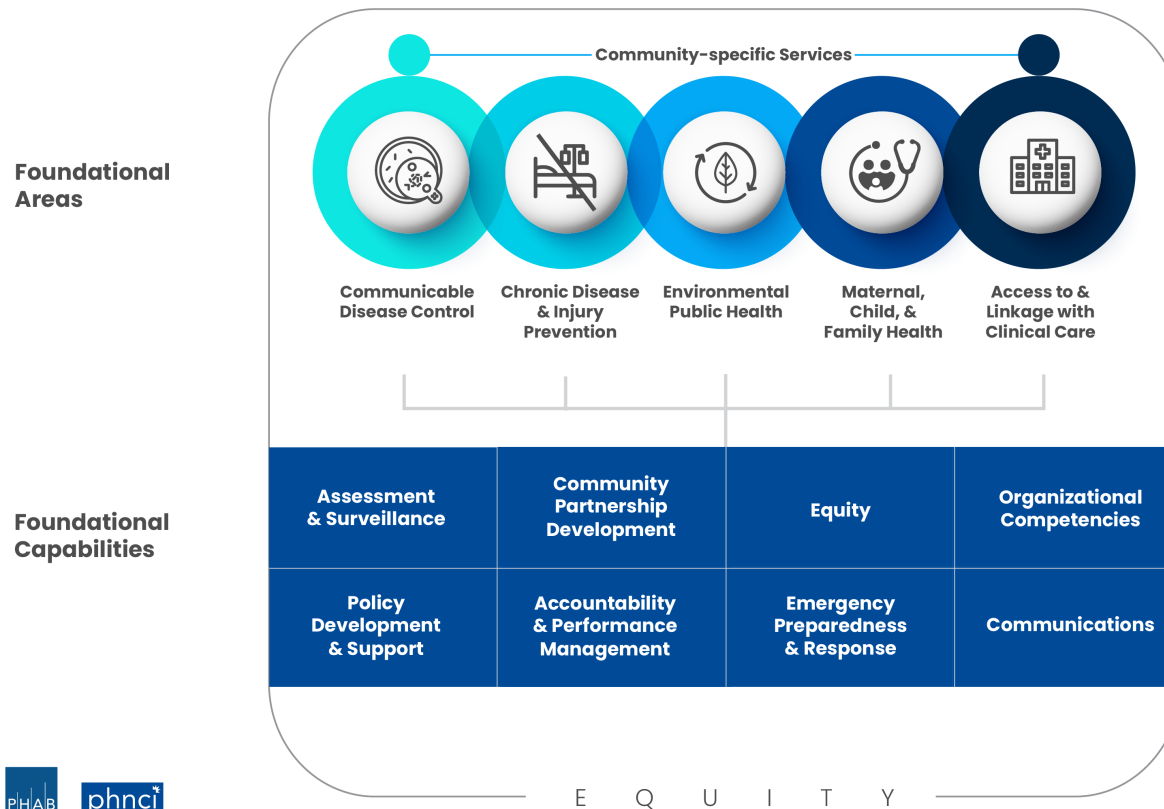
Social Determinants of Health



Social Determinants of Health
Copyright-free

 Healthy People 2030

Foundational Public Health Services



February 2022

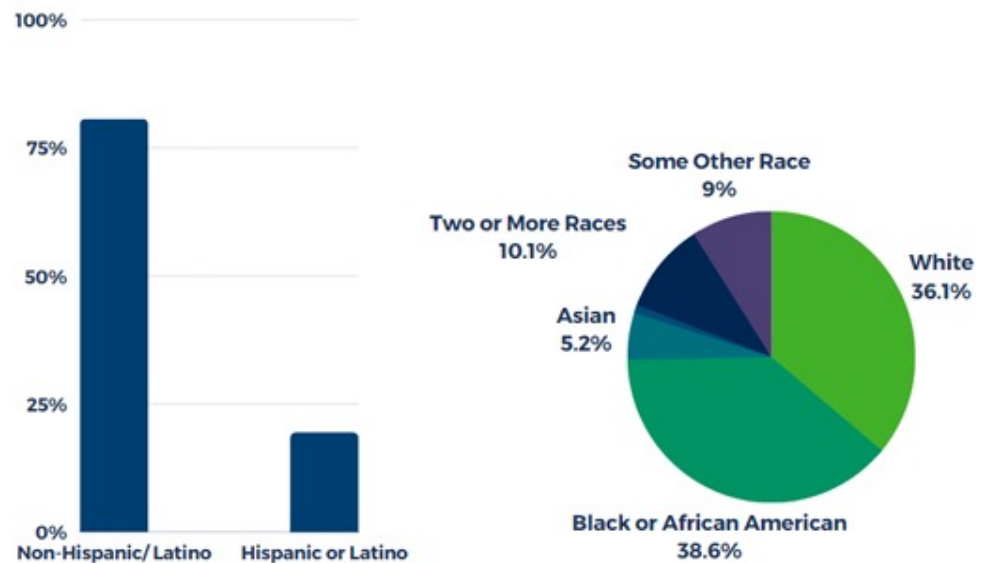
Milwaukee Demographics

577,222
Total Population

\$46,637
Median Household Income

27.3%
Bachelor's Degree or Higher

Race and Ethnicity Breakdown



Data Source: American Community Survey, 2020

**Based on 2020 US Census Data*

Milwaukee Priority: Reimagine Lead Program

- Intervention at 10mcg EBLL and above (August 2022)
 - PHN Assigned
 - Lead Risk Assessor
 - Lead safe home kit, including water filter
- Focus on lead PAINT
- Lead Poisoning per CDC = 3.5 micrograms per deciliter*
- ARPA: \$26 million project
 - Goal: Create a cross-sector city-wide lead paint abatement system
 - Goal: Abate over 600 units
- Blood lead levels drop when lead paint hazards are controlled
- **Expanding partnerships in public, private, and nonprofit sectors to move Milwaukee forward**

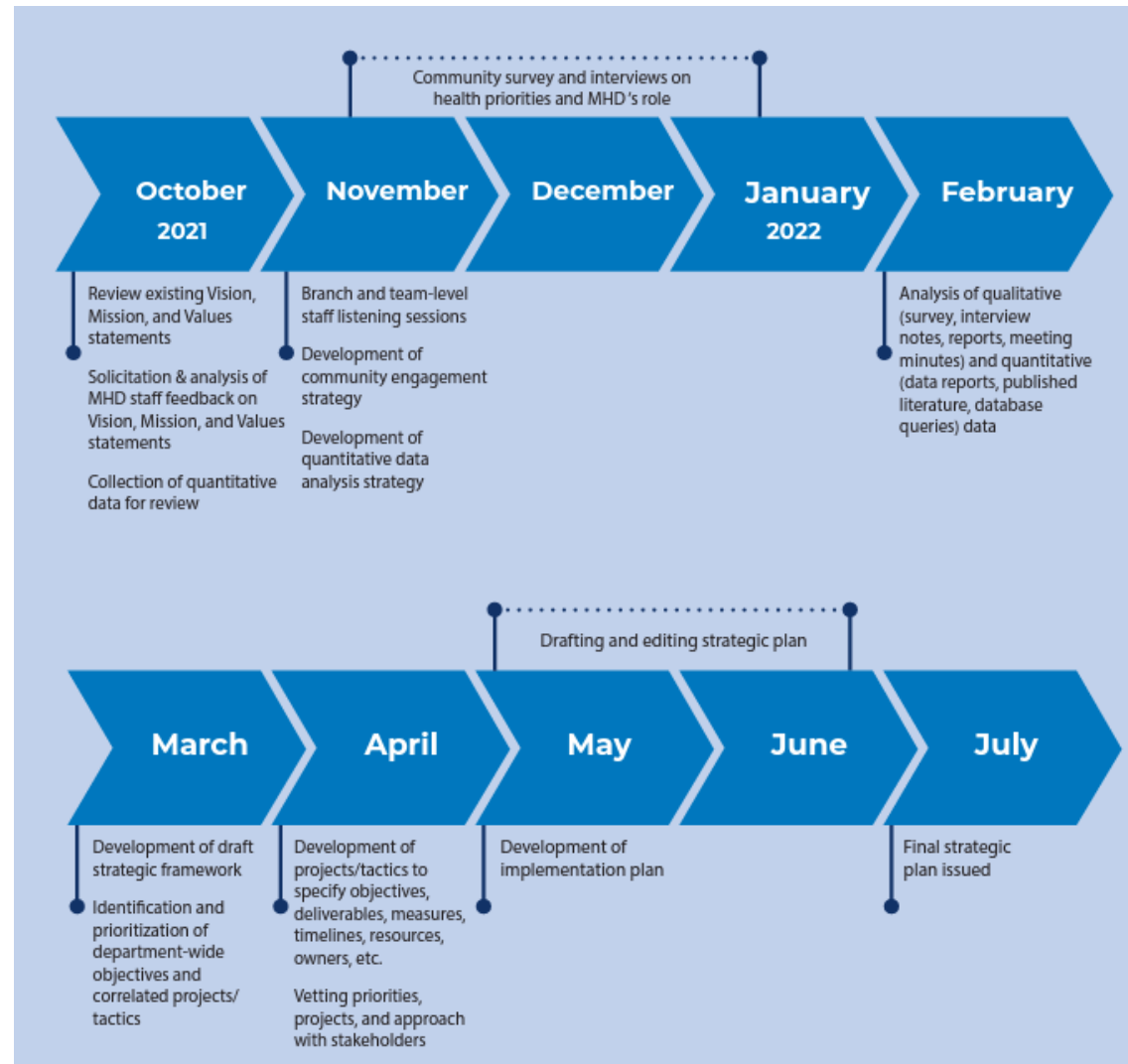
* May 2021, based on 97.5th percentile of blood lead values for children ages 1-5 in US

* In 2012 changed from 10mcg to 5mcg

Milwaukee Priority: Implement 5-Year Strategic Plan

Built a Strong Foundation

- 10+ months of hard work
- Department-wide, leader commitment
- Staff & Community input
- Many, many hours of meetings & lots of homework

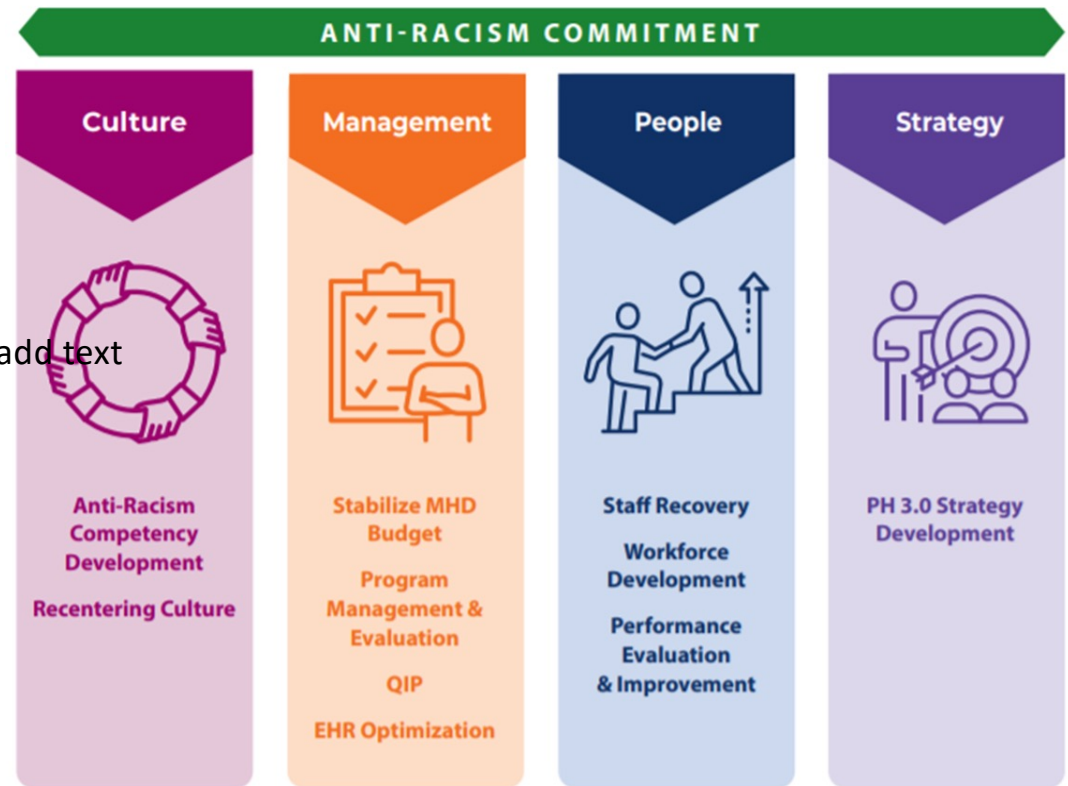


Strategic Plan: Phase 1 (Internal Focus)

Years 1-3: Recovery and Reset

- Pre- & Post Pandemic Transition
- Focus on four themes:
 - Culture
 - Management
 - People
 - Strategy
- Each theme has distinct goals, tactics, measures, owners, and enablers

Click to add text



Strategic Plan: Phase 2 (External Focus)

Years 4-5: Public Health 3.0

Focus on evolving our relationship with Community:

Primarily a
Service Provider



- Service Provider
- Strategist
- Policy maker
- Advocate
- Partner

Strategic Plan: Anti-Racism Approach



- Commitment to restructuring and dismantling systems that create unhealthy or inequitable environments
- We will explore how **racism** influences:
 - Structures & Programs
 - Who/how we hire
 - Data & Policies
- Core to PH 3.0 ->Critically Assess:
 - Our authority & how we **share/divest power**

Ozaukee County Demographics

91,503

Total Population

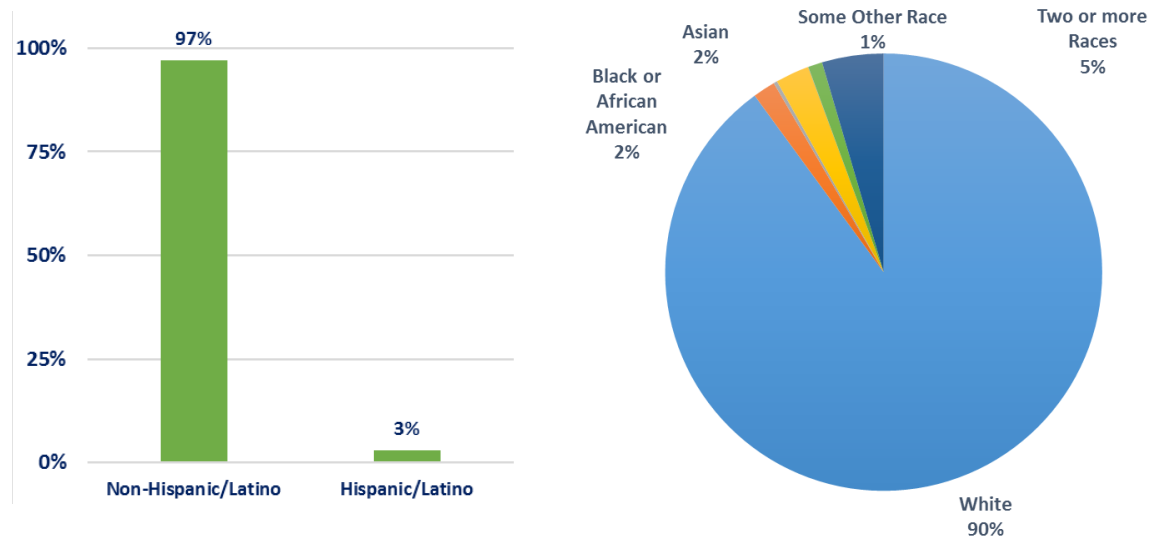
\$85,402

Median Household Income

50.4%

Bachelor's Degree or Higher

Race and Ethnicity Breakdown



Based on 2020 US Census Data

Washington County Demographics

136,761

Total Population

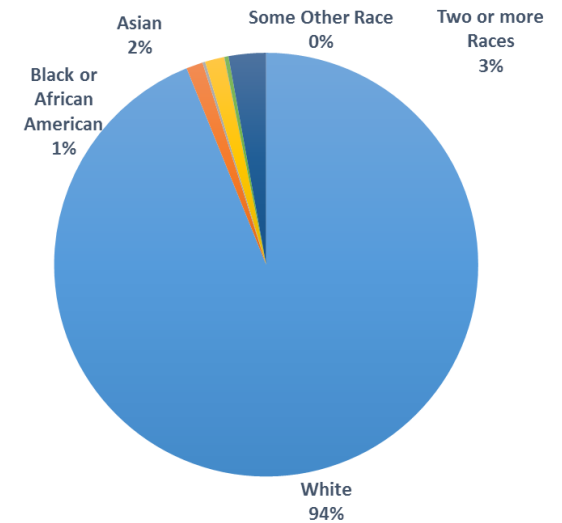
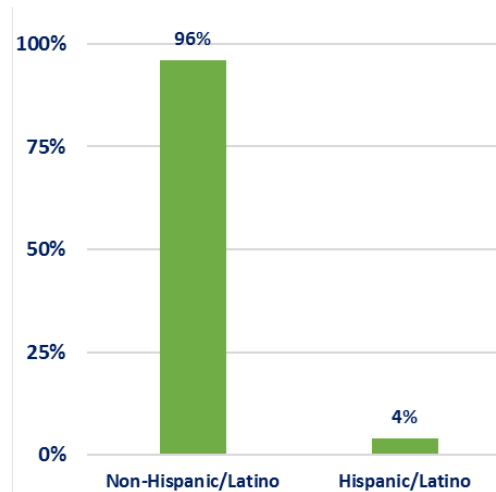
\$83,384

Median Household Income

32.6%

Bachelor's Degree or Higher

Race and Ethnicity Breakdown



Based on 2020 US Census Data

Washington Ozaukee Priority: Sexual Health & Wellness

2022 – 2025 CHIP Priorities

1. Mental Health
2. Substance Use
3. Sexual Health & Wellness

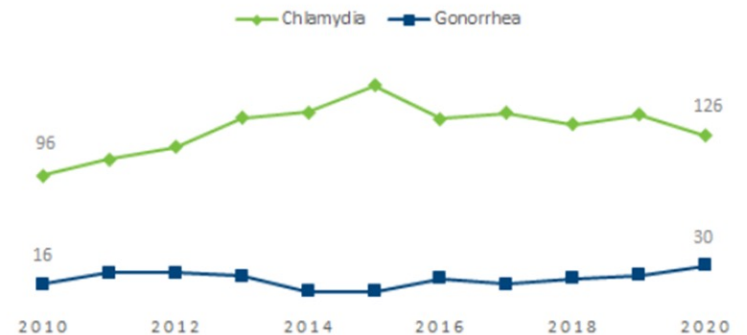
Objectives:

1. 50% of schools participate in the Youth Risk Behavior Survey
2. Develop a Sexual Health & Wellness Needs Education Campaign

2X

Reported rates of gonorrhea in Ozaukee and Washington Counties more than doubled from 2010 to 2020 (WEDSS).

STI rate per 100,000 people in Ozaukee County



Access to & Linkage with Clinical Care

Healthcare partnership is vital to individual health and population health.

- Public Health Partners
 - Hospital Systems
 - Albrecht Clinic (Washington)
 - Huiras Clinic (Ozaukee)
- How partners work together
 - Coalition participation
 - Healthcare policy for new and existing populations
 - Operational expansion (volunteers)



Oak Creek Demographics

36,321

Total Population

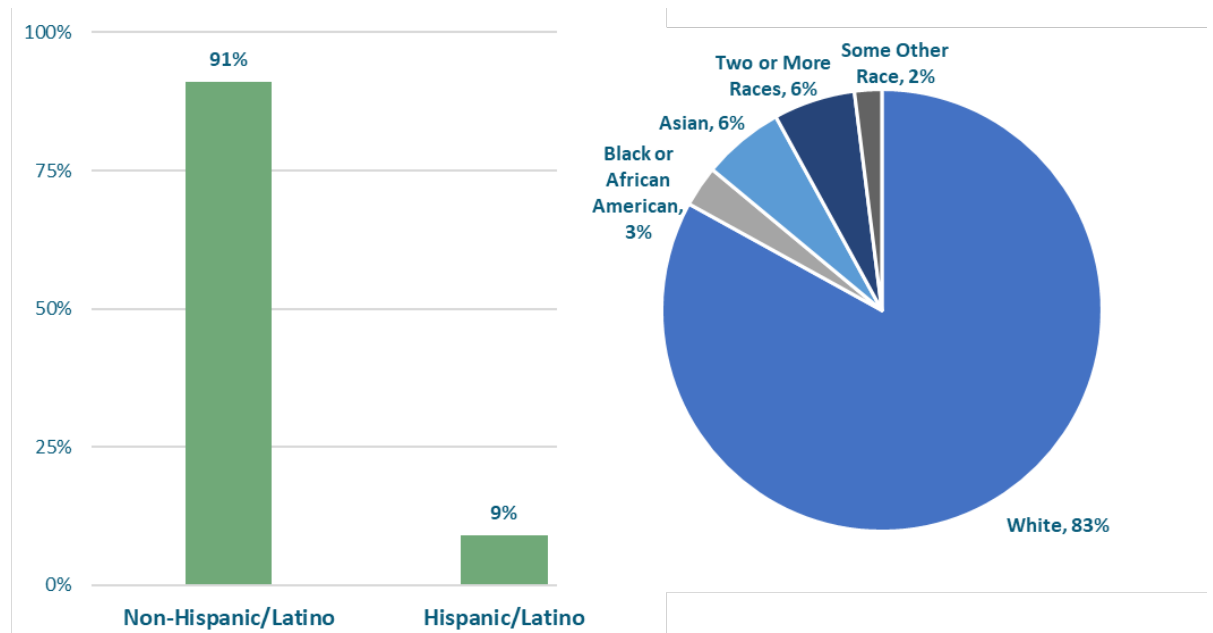
\$75,657

Median Household Income

36.5%

Bachelor's Degree or Higher

Race and Ethnicity Breakdown



Based on 2020 US Census Data

Oak Creek Priorities

Methodology

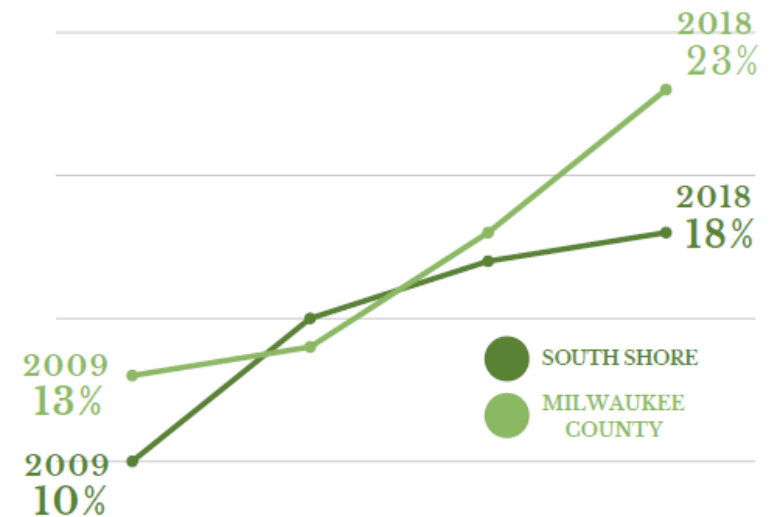
1. Multi-jurisdictional Steering Committee
2. Data collection and analysis
3. Development of community coalition
4. Identification of priorities
5. Development of action plan
6. Implementation

2022 – 2027 Community Health Improvement Plan (CHIP) Priorities

- Mental Health
- Substance Misuse

Percentage of adults in South Shore who considered suicide in the past year doubled between 2015 and 2018

(Milw Co CHNA, 2018)



The percentage of adults reporting a Mental Health Condition have increased in both the South Shore and Milwaukee County.



Mental Health Strategies

CHIP Objectives

- Increase awareness and utilization of mental health resources
- Increase awareness of self-care strategies and resources
- Decrease stigma surrounding utilization of mental health services
- Work to make mental health services available
- Increase sense of belonging felt by community members

Strategies to Address Mental Health

- Case Manager embedded within public health
- Community conversations
- Partnership with employers and healthcare systems to share resource information
- Youth peer mentor groups
- Collaborate with Library to offer trainings, classes, information
- Participate in community events to share resources, information, wellness activities
- Stigma reduction campaign

Maternal and Child Health

- Improve the health and well-being of mothers, infants, children, and families
- DHS grant funding for local health departments
- Collaboration with community partners
- Health equity focus

MCH Priority Areas

1. Social Connections
2. Breastfeeding
3. Developmental screening
4. Adolescent well-being
5. Health Equity and Community Engagement
6. Perinatal Mental Health
7. Physical Activity and Nutrition

Public health activities to support maternal and child health

- Home visiting
- Breastfeeding support
- Parenting education
- Child passenger safety
- Safe sleep education
- Child developmental screening and resource referral
- Child hearing screening and resource referral
- Immunization
- Trauma informed care training for professionals

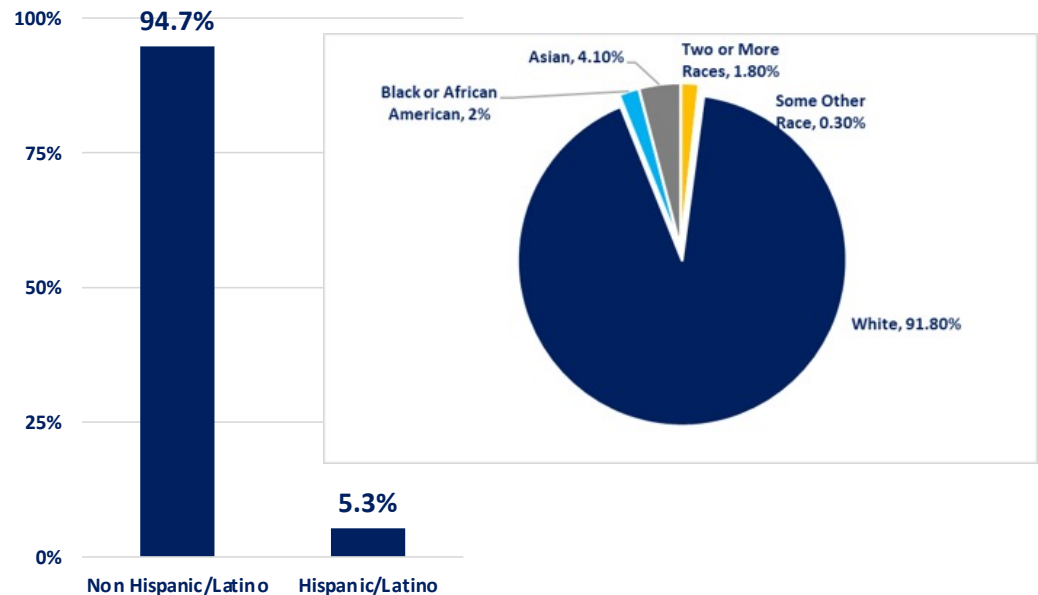
Waukesha County Demographics

408,756
Total Population

\$88,895
Median Household Income

44.8%
Bachelor's Degree or Higher

Race and Ethnicity Breakdown



**Based on 2020 US Census Data*

Waukesha County Priorities – Substance Use



2022 – 2027 CHIPP Priorities

(not confirmed)

1. Substance Use
2. Mental Health
3. Healthy Aging



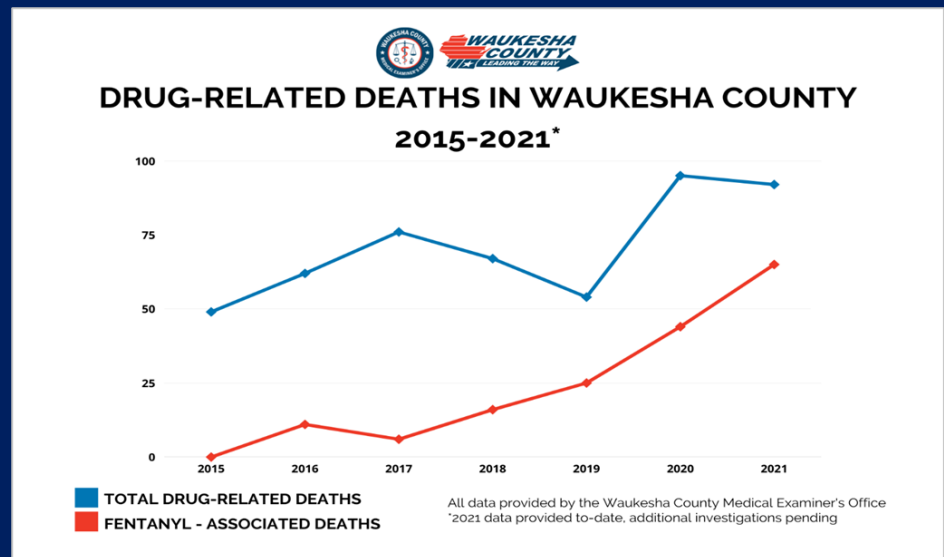
Methodology

1. Create Steering Committee
2. Conduct 4 Health Assessments
3. Pick Strategic Health Priorities
4. Create Community Led Action Teams



WAUKESHA COUNTY
HEROIN TASK FORCE
WORKING TOGETHER
to break the cycle of substance use
through community action & hope!

Fentanyl is a Community Health Crisis in Waukesha County



✓ Drug Related Deaths Nearly Doubled from 2019 to 2020

✓ 71% of Drug Related Deaths in 2021 associated with Fentanyl

**ONLY TRUST
PILLS FROM
A LICENSED
PHARMACY**



SCAN HERE / LEARN MORE

**ONE
PILL CAN
KILL**

4 out of 10 pills
with **FENTANYL**
have a potentially
lethal dose.

#OnePillCanKill



**BE AWARE
SHARE & EDUCATE**

**NOT
ALL
PILLS
ARE
REAL**

Fake pills can be cut
with fentanyl.
Fentanyl is odorless,
tasteless & can be deadly.

#OnePillCanKill



SCAN HERE / LEARN MORE

**ONE
PILL CAN
KILL**



**BE AWARE
SHARE & EDUCATE**

**DON'T BE
FOOLED BY
RAINBOW
FENTANYL.**



SCAN HERE / LEARN MORE

**ONE
PILL CAN
KILL**

Every color, shape
& size of fake pills
can be extremely
dangerous.

#OnePillCanKill



**BE AWARE
SHARE & EDUCATE**

#OnePillCanKill Campaign Launch Nov. 1st



Public Health

Prevent. Promote. Protect.

Waukesha County Public Health

Communicable Disease Control

A communicable disease is an illness that can be transmitted from person to person

- Public Health Nurses and Disease Investigators follow up on over 100 [Reportable Communicable Diseases](#)
- Public Health Programs for Communicable Disease in WC
 - Waukesha County Immunization Clinic for Children and Adults
 - Tuberculosis (TB) Skin Tests
 - Partner Services
 - International Travel Clinic



Public Health
Prevent. Promote. Protect.

Waukesha County Public Health



Q & A

Kirsten Johnson

City of Milwaukee
Health Commissioner
krjohns@milwaukee.gov

Hollie Milam

Washington Ozaukee Counties
Deputy Director
hollie.milam@washozwi.gov

Darcy DuBois

Oak Creek
Health Officer
ddubois@oakcreekwi.gov

Frances Thomas

Waukesha County
Public Health Strategy Supervisor
fthomas@waukeshacounty.gov